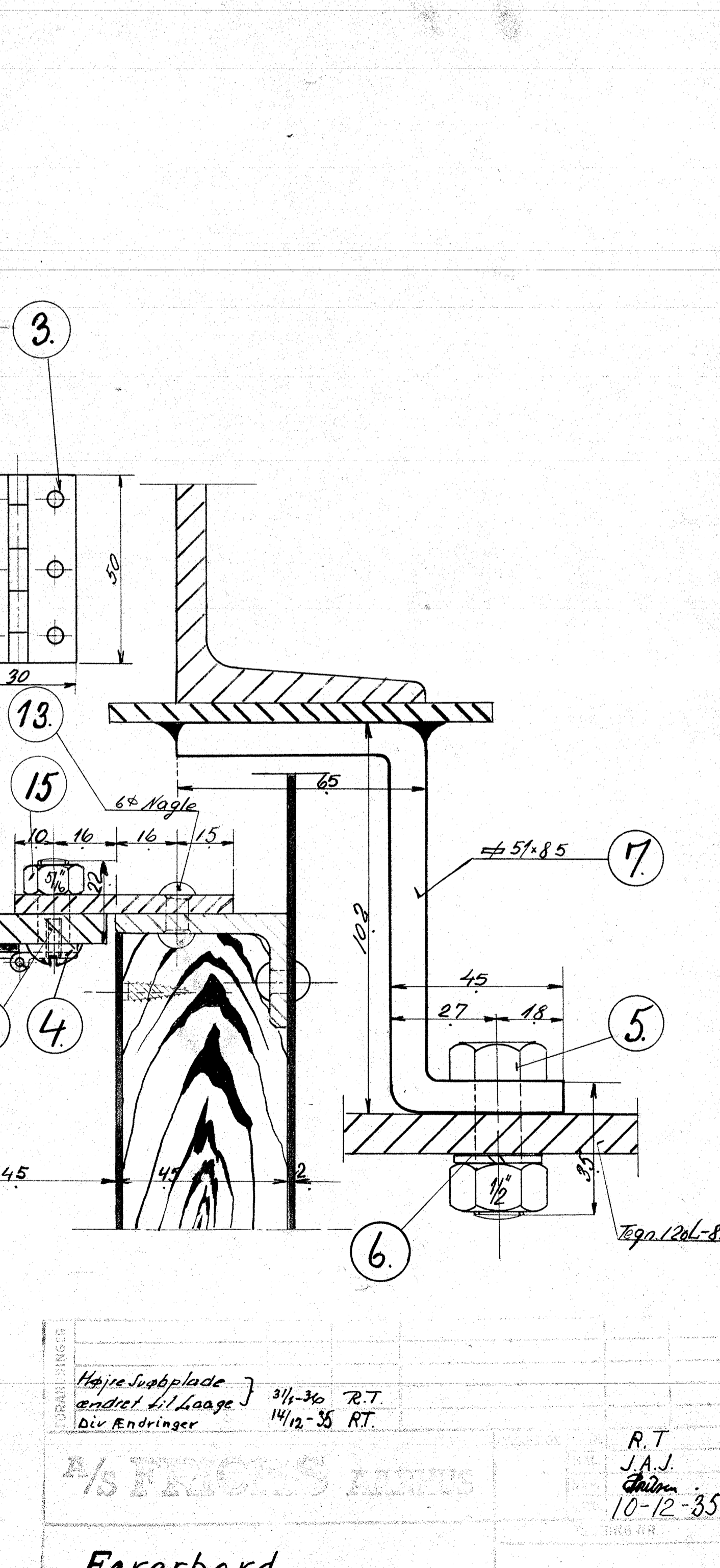
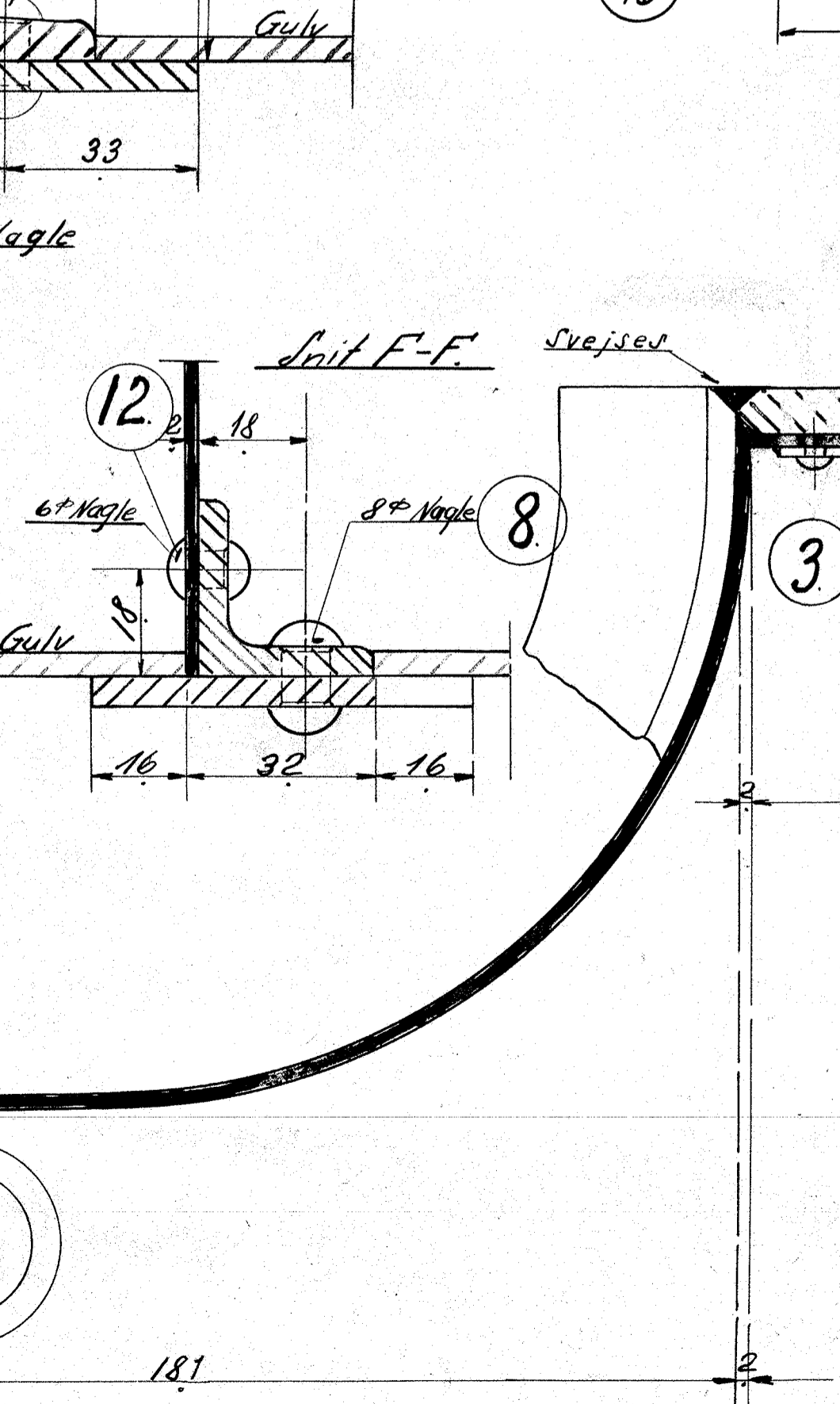
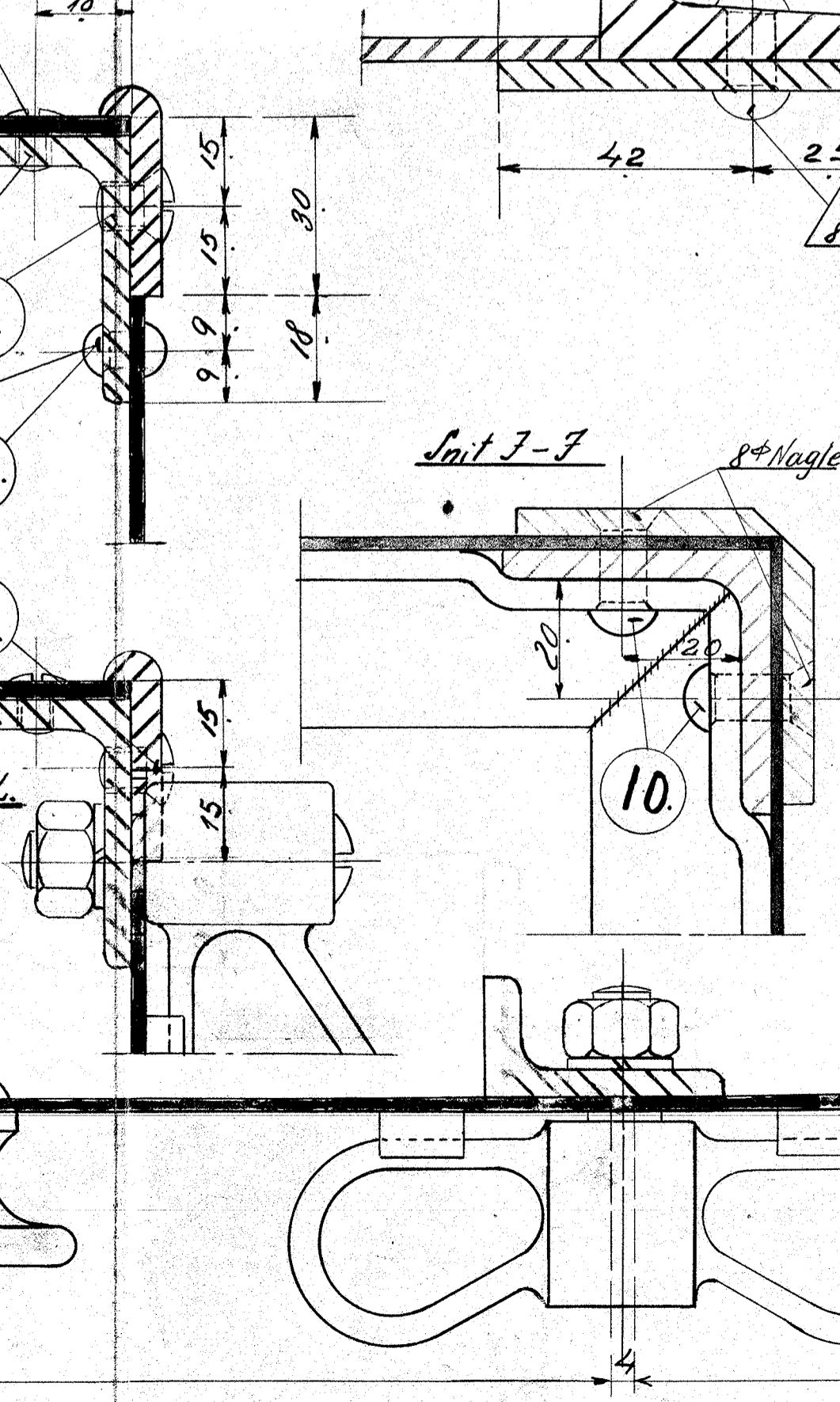
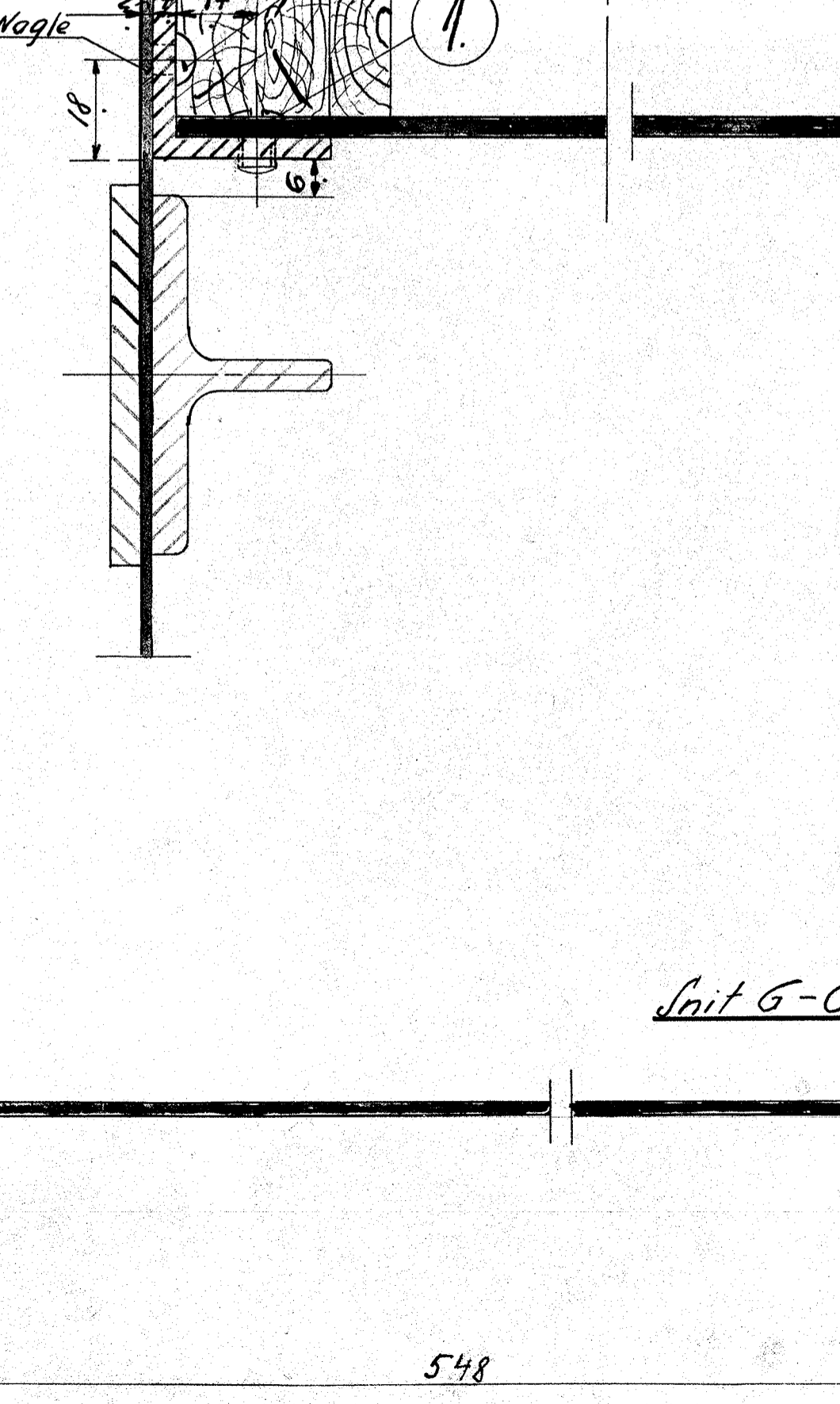
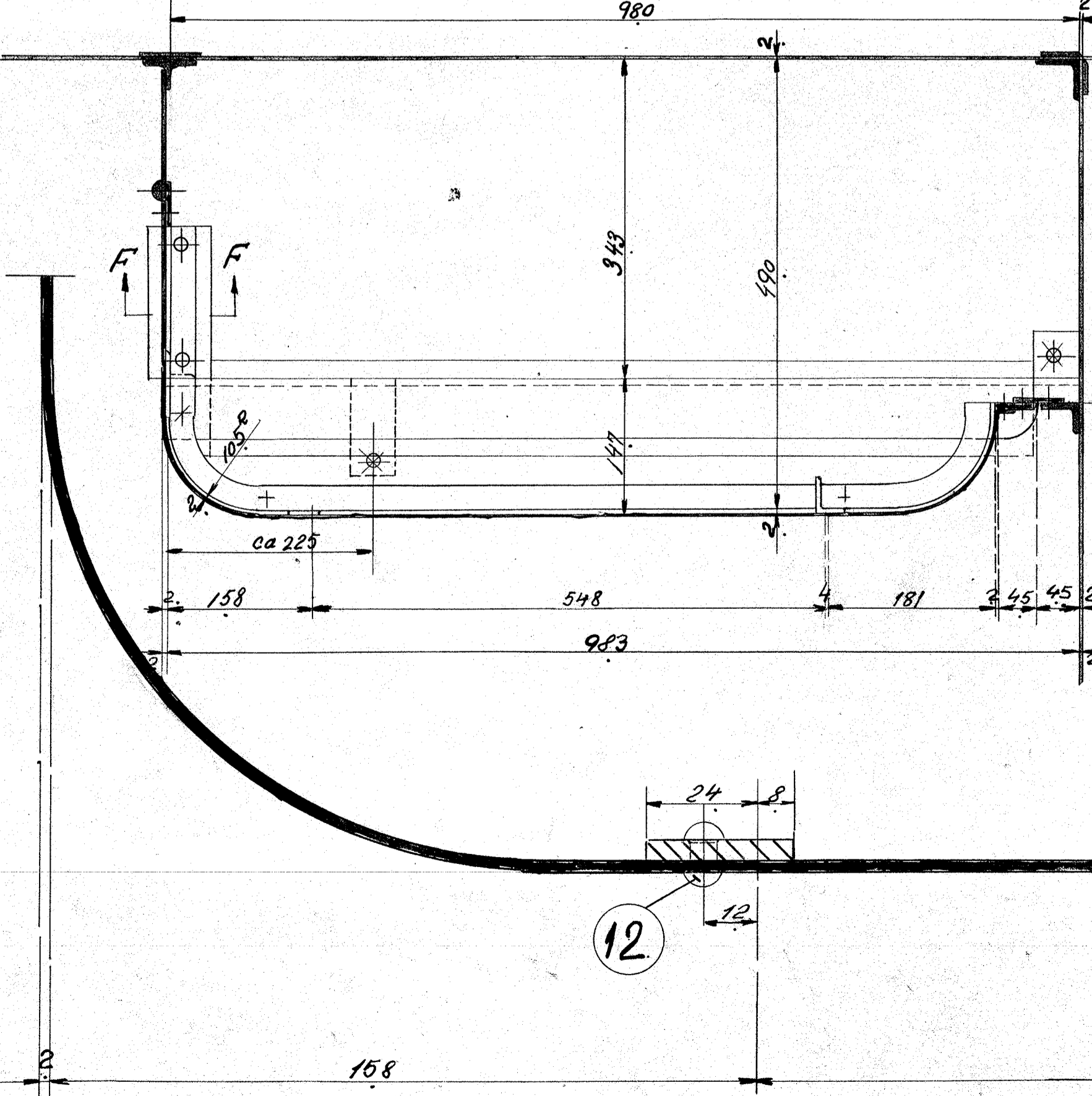
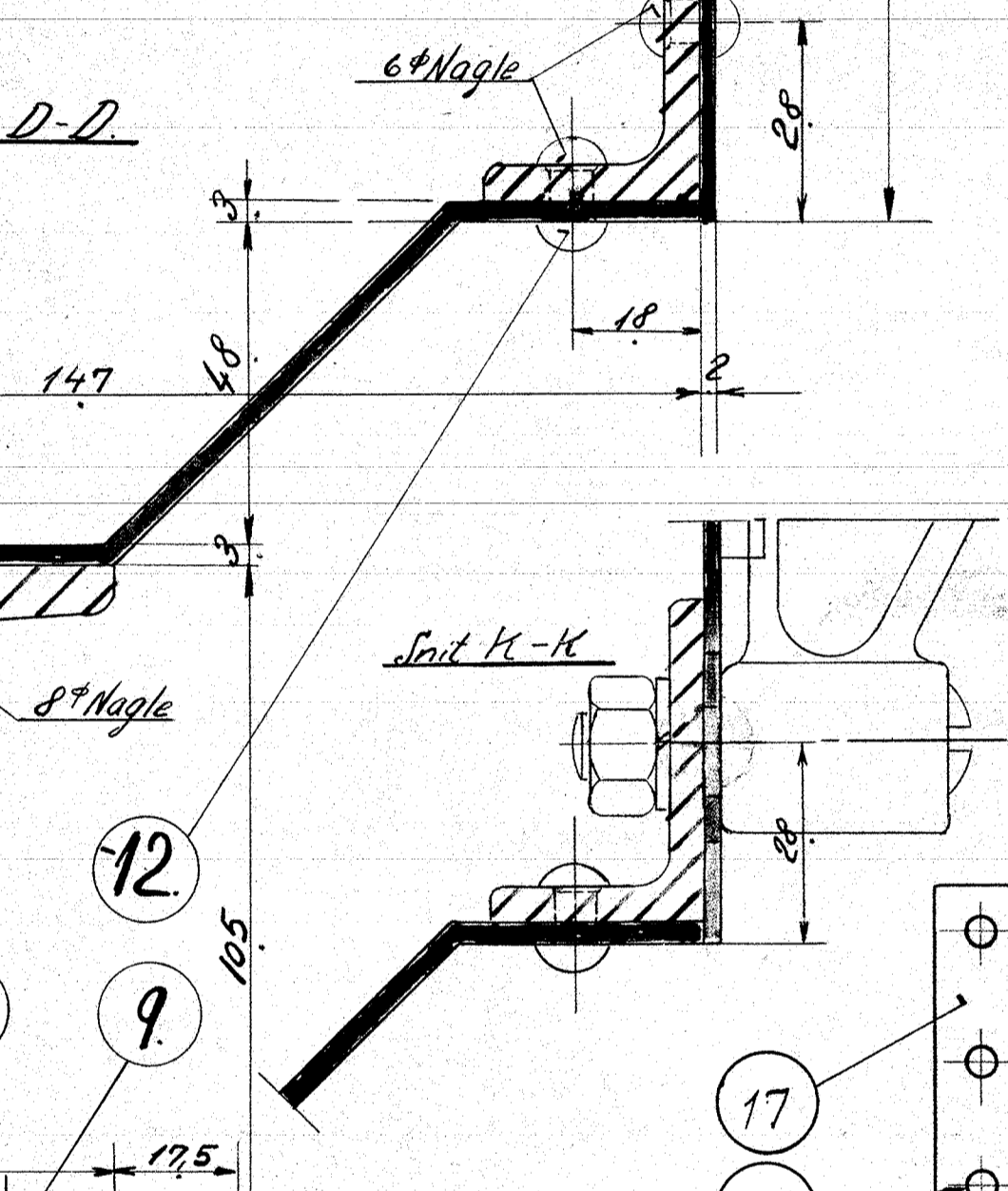
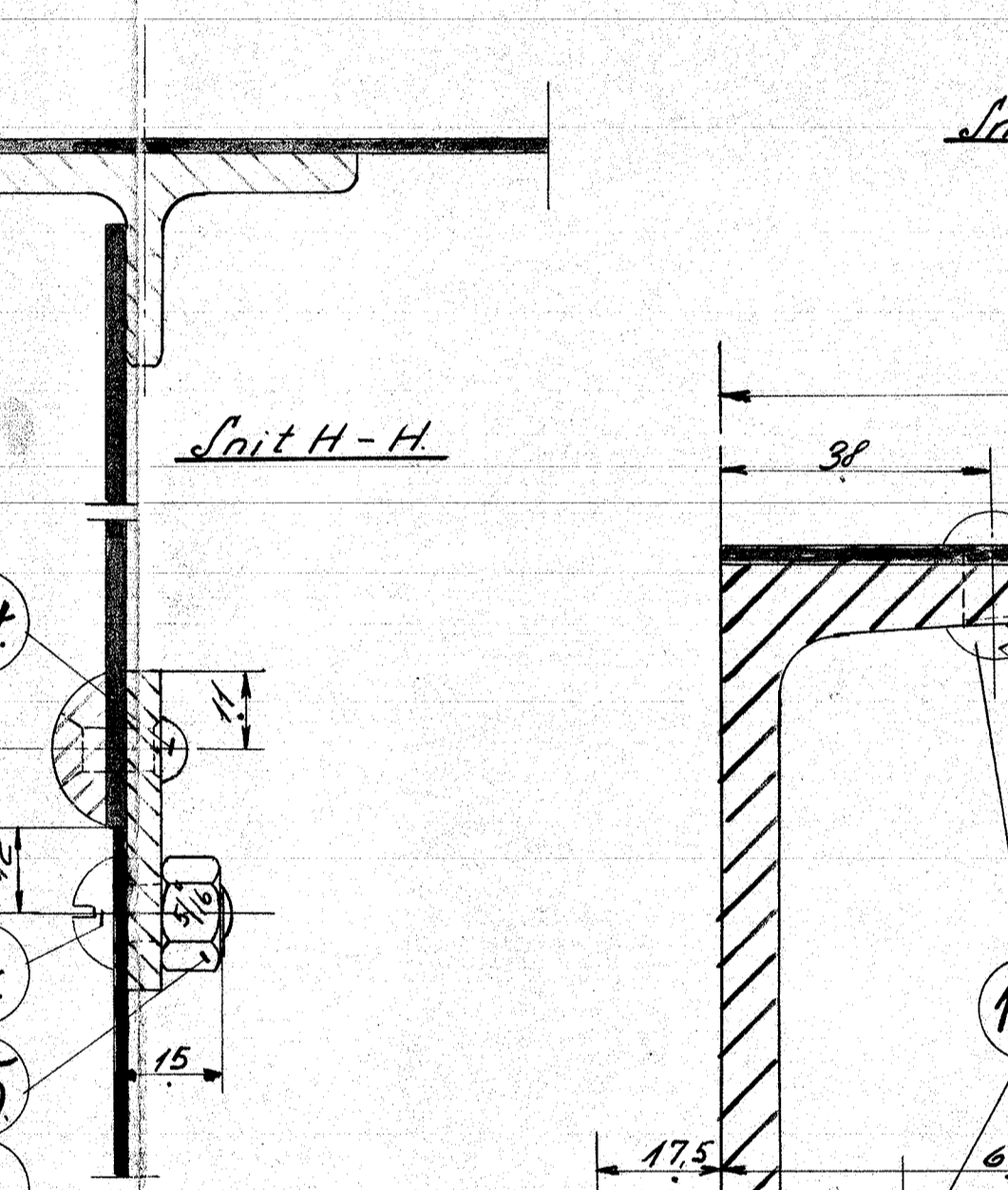
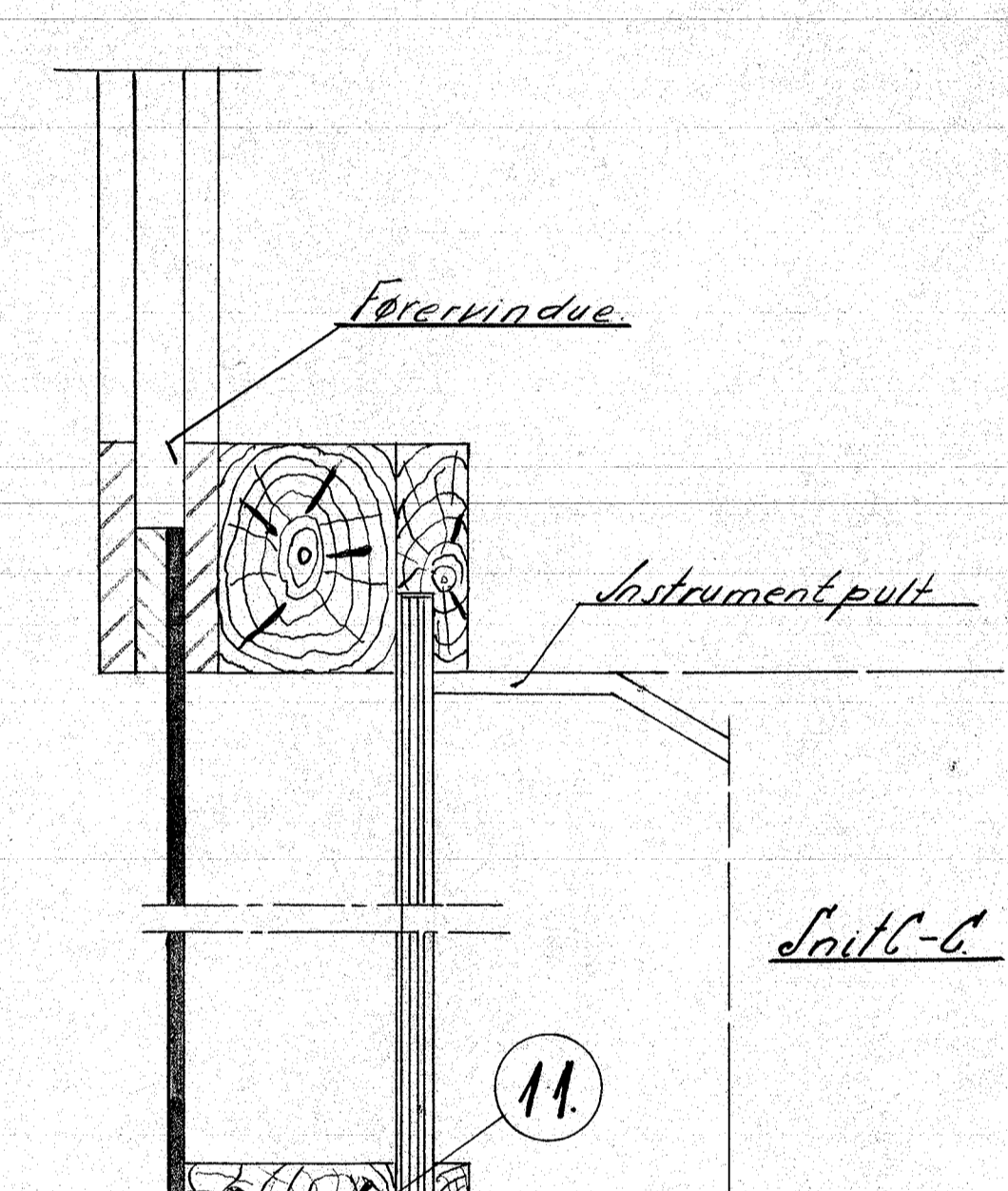
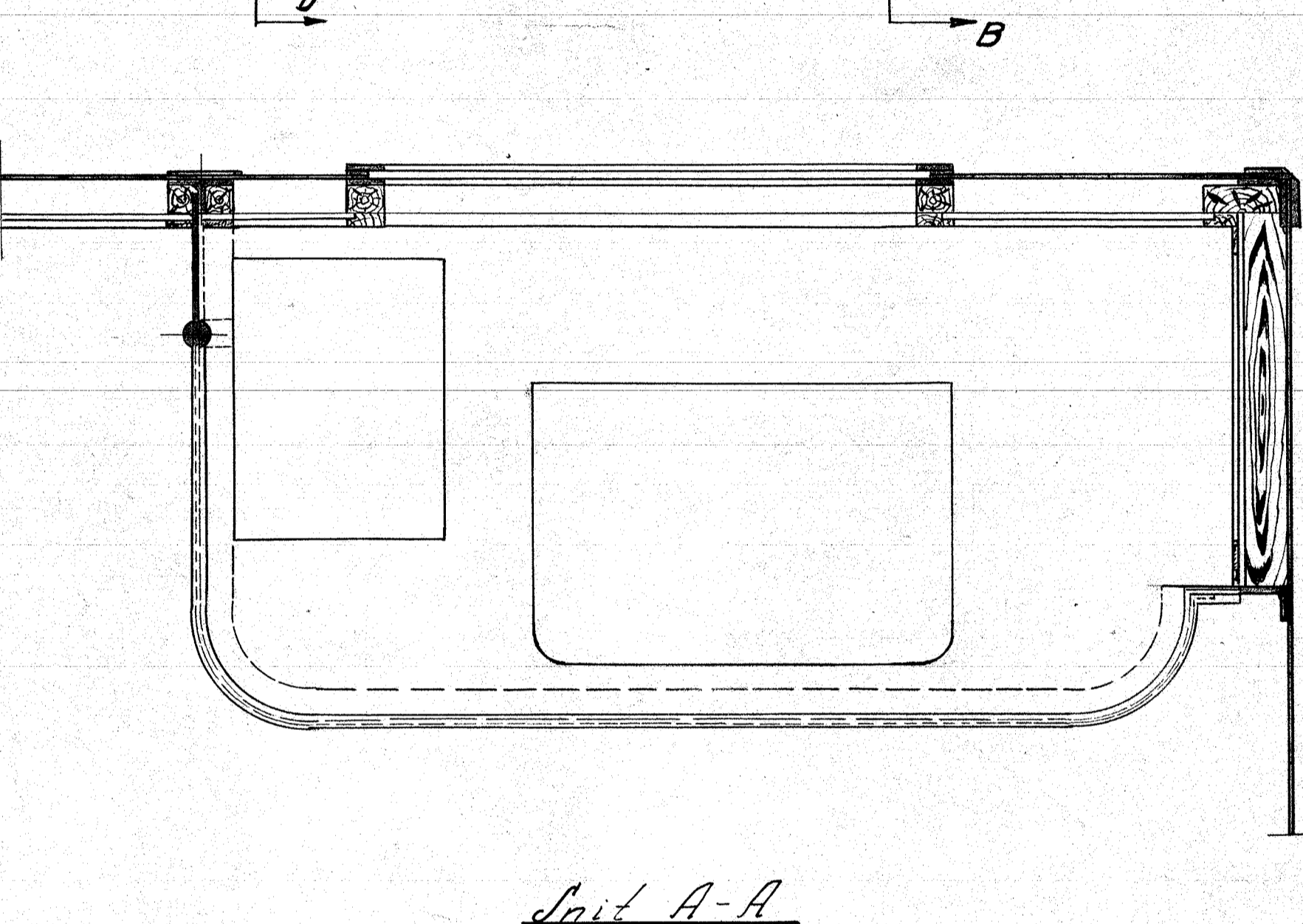
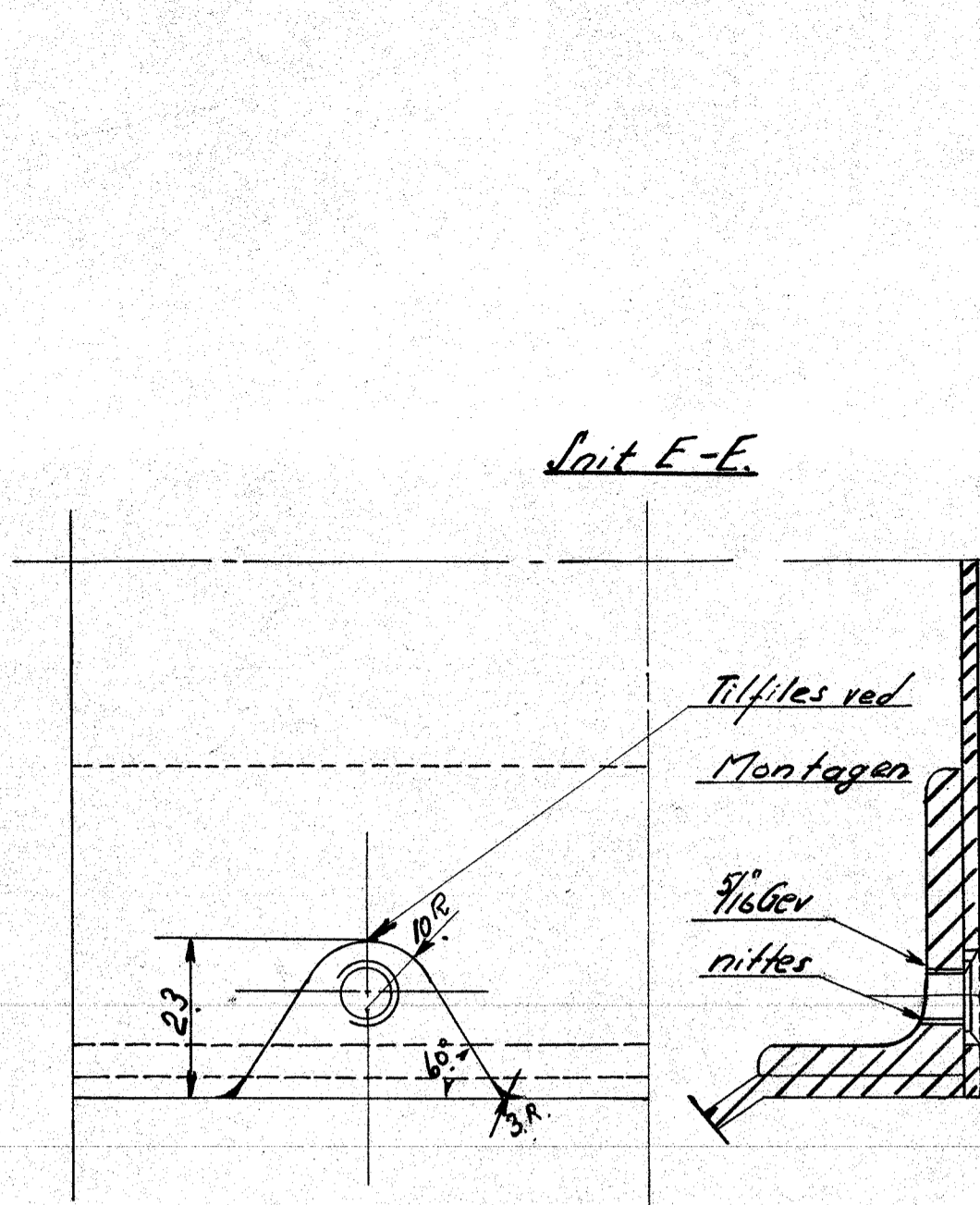
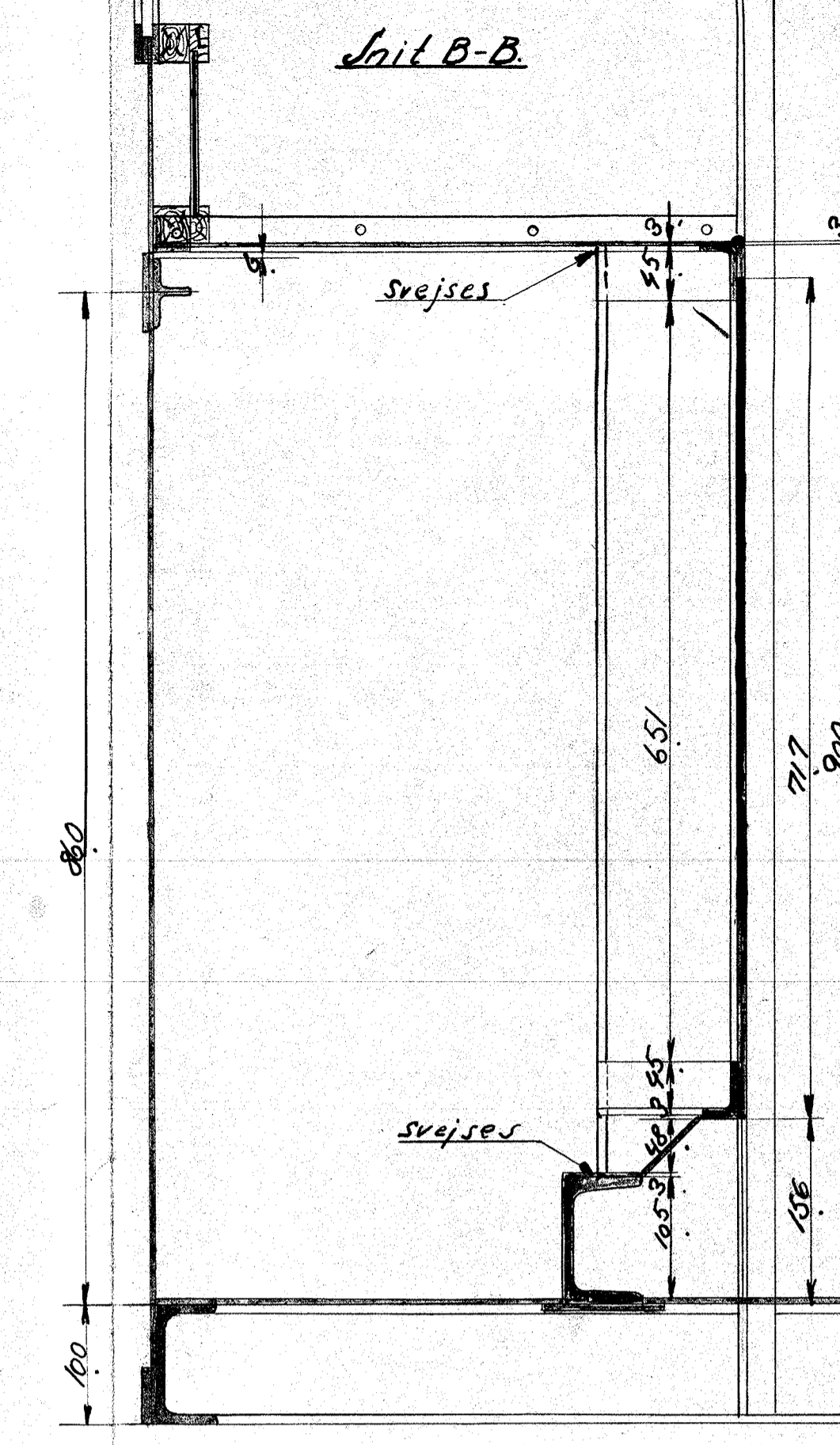
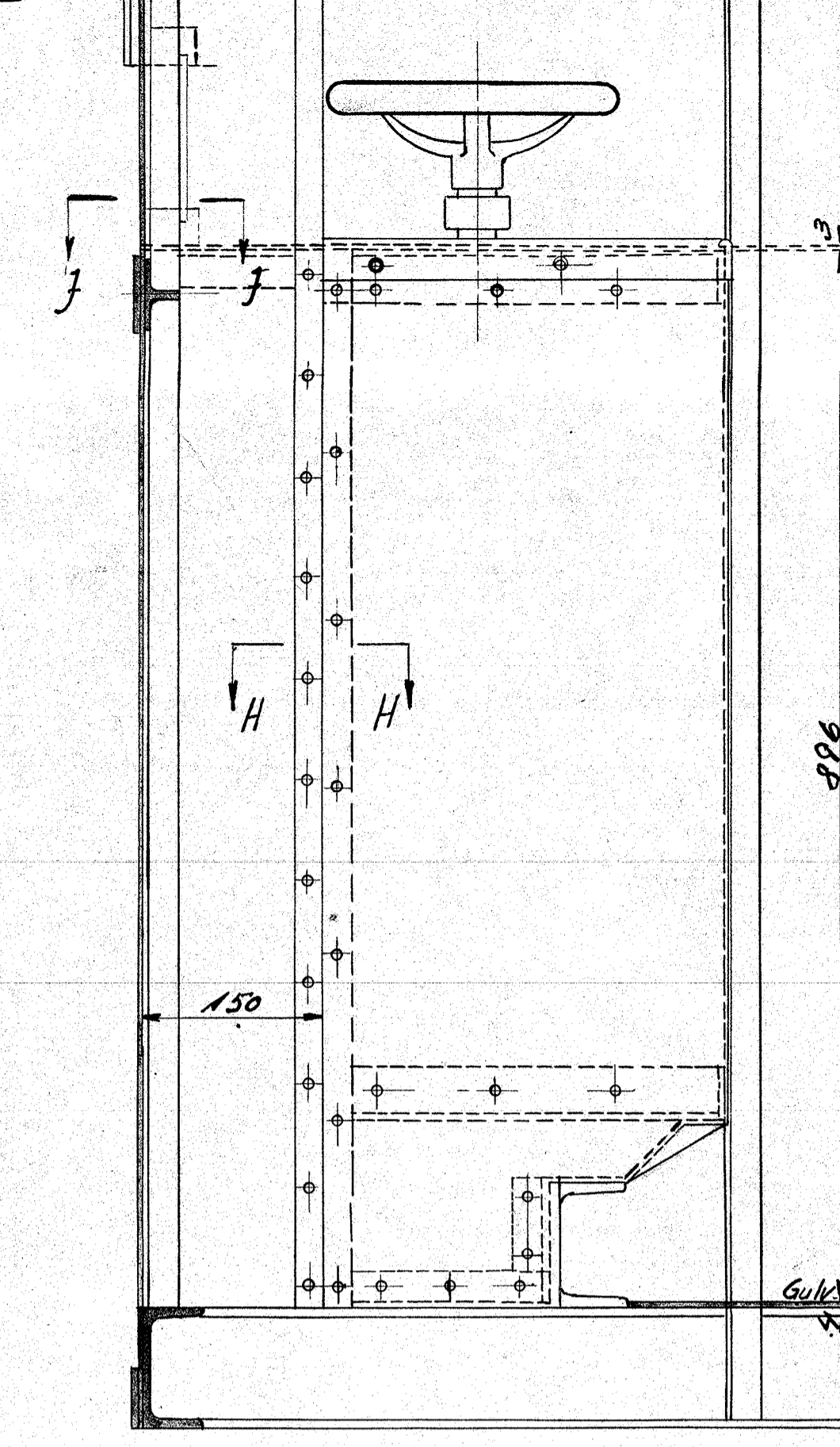
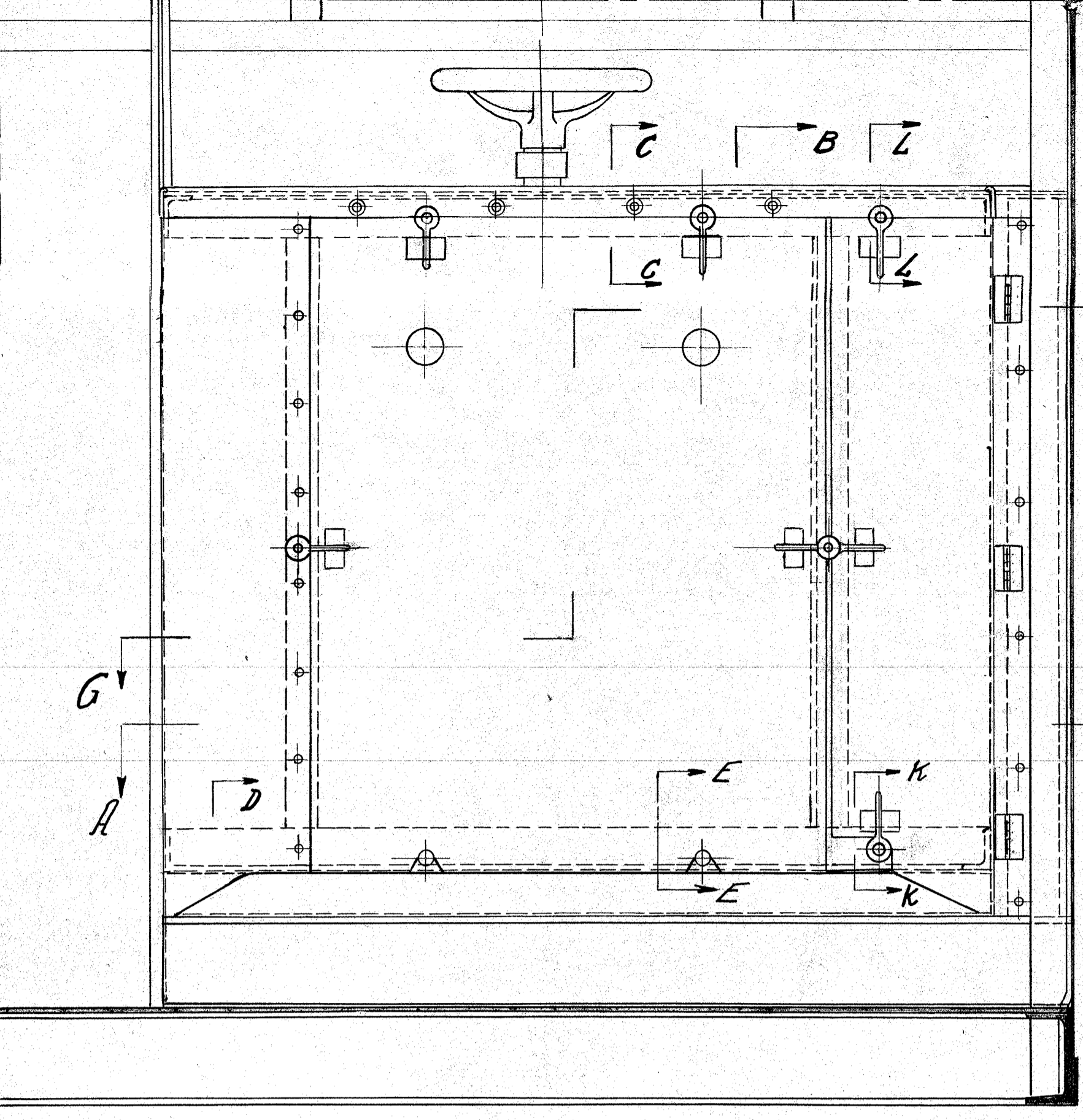


SKITTE NR. 60141^a

STYKKE NR.	BESKRIVELSE	MÅL	MATERIAL	REMARKS
40	Skrue 1/4" x 10	1	Messing	Magasin
20	" 5/16" x 10	2	"	"
18	" 3/16" x 10	3	Flussj.	"
26	" 14.58 k 5/16" x 15 12 " " x 22	4	"	"
2	Sort Bolt 1/2" x 35	5	"	"
2	Fjederstikre 1/2"	6	staa	"
2	Understøtning	7	# Flussj	51.85 x 450
4	Nagle 8" x 22	8	Nillem	Magasin
10	" " x 24	9	"	"
38	" " x 26	10	"	"
16	" 5" x 10	11	"	"
50	" 6" x 17	12	"	"
18	" " x 19	13	"	"
22	" " x 22	14	"	"
26	Motrik 5/16"	15	Flussj.	"
18	Nagle 4" x 7	16	"	"
6	Hængsel	17	"	"



Højre Svøplade 311.36 R.T.
 ændret til Løase 14/12-35 RT.
 Div. Rørdinger

R.T.
 J.A.J.
 10-12-35

137L-1720
 Diesel-el 275/300 HK Motorloko